

Big City Plus - Melbourne Plus



-  **Option A**
Dark Blue & Orange (shown)
-  **Option B**
Purple & Yellow
-  **Option C**
All Green

Code – BC/MEL

Age

5-12 years

Materials

Stainless Steel

Compact Grade Laminate (CGL)

Nylon Steel Cored Rope

Various Plastic Mouldings

LLDPE Slide

A junior modular tower system comprising of:

- Ramp Access 400mm Tower
- Ramp Access 650mm Tower
- 2 Bubble Above Play Panels
- Musical Above Play Panel
- Spin Ball Play Panel
- Ball Blast Play Panel
- Tactile Above Play Panel
- Ramp Access Step With Step
- Ramp Access Step No Step
- Plastic Tube Slide (1.1m)
- Bottom Ramp
- Middle Ramp

Technical Information

Equipment Dimensions

Length / Width / Height **8.9m x 7.8m x 2.3m**

Surfacing and Area Required

Recommended Minimum Space L/W/H **12.5m x 11.4m x 4.8m**

Max Gradient of Ground **1 in 50**

Free Height of Fall **1.1m**

Impact Area **70.09m²**

Synthetic Area (i.e. EPDM / Wet Pour / Synthetic Grass etc.) **61.49m²**

Loosefill at 150mm (i.e. Bark / Cushionfall / Sand) **13m³**

GrassLok Tiles **98m²**

Installation Information

SGF

SF (if different)

Installation Time **2 Persons 23 Hours**

Overall Weight **1237kg**

Heaviest Part **46kg**

Largest Part **2.6m x 1.0m x 1.0mm**

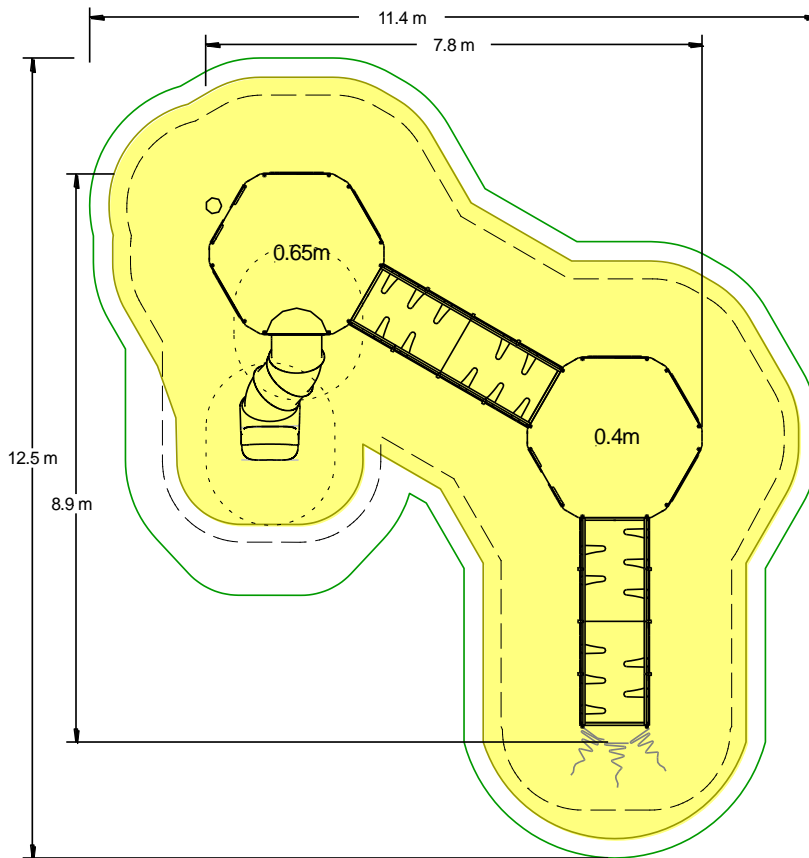
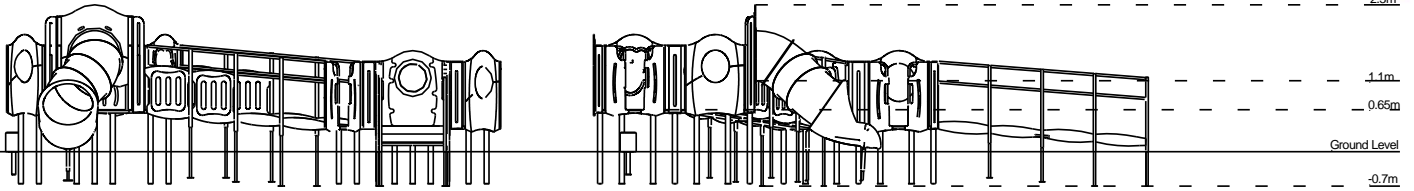
Longest Part **2.6m**

Concrete Required **1.448m³** **1.972m³**

Certified to ASTM F1487

[Click here for more information & downloads](#)





[Click here for more information & downloads](#)

