



Whale Willy

- take a ride on Willy's back and feel the wild sea ...

Top play value

- Rocking spring adds an extra thrill
- Back rest and side panels for the youngest
- Spurs the children's imagination
- Trains balancing skills
- Challenges gross motor skills

Top quality

- Skid-proof sitting surface
- Maintenance-free materials
- Does hardly heat up in the sun

Whale Willy 1
Item 302110

PE

Our polyethylene boards do not split, junctions between them are seamless. Neither fingers nor parts of clothing can get stuck or rip.

Spring

Spring of special steel can bend into all directions. Intervals between the coils minimize crushing hazard. Patented spring suspension with self locking nuts.

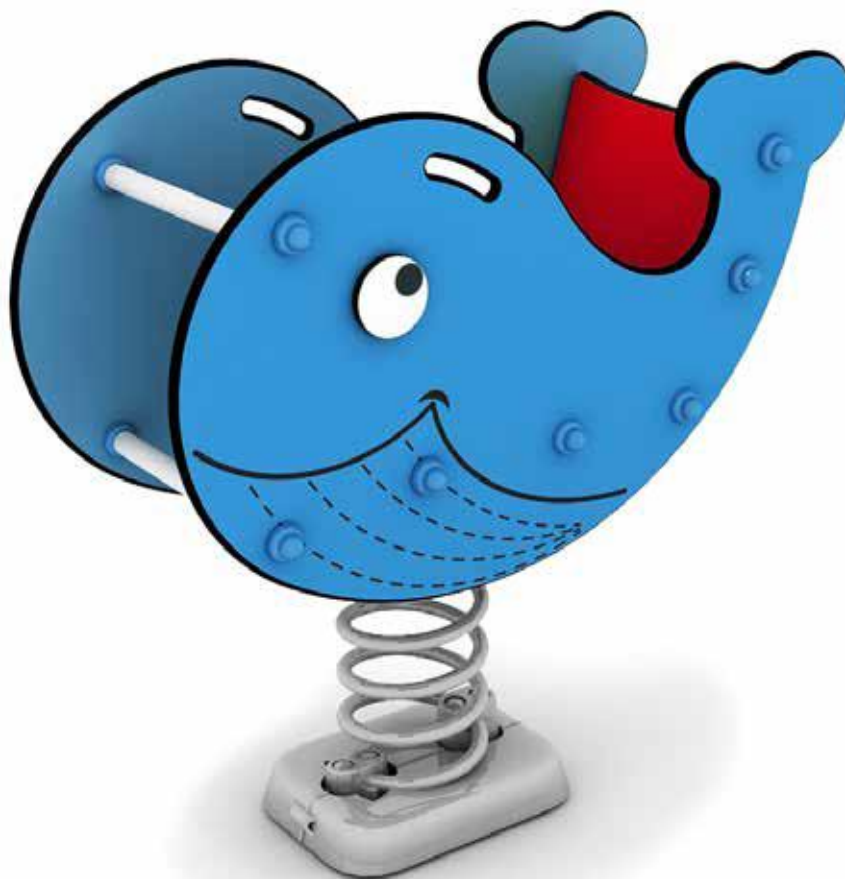
Skid-proof

The seat surface is coated with 3 mm skid-proof rubber, which also makes the product more robust.

Fastening

You can choose between a ground anchor for soil and brackets for concrete. Perfect on rubber surfaces.

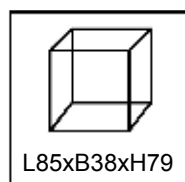
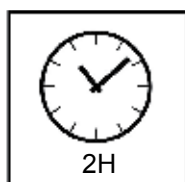
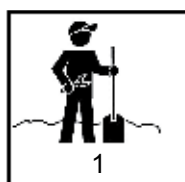
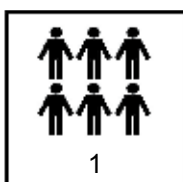
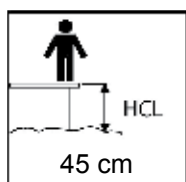
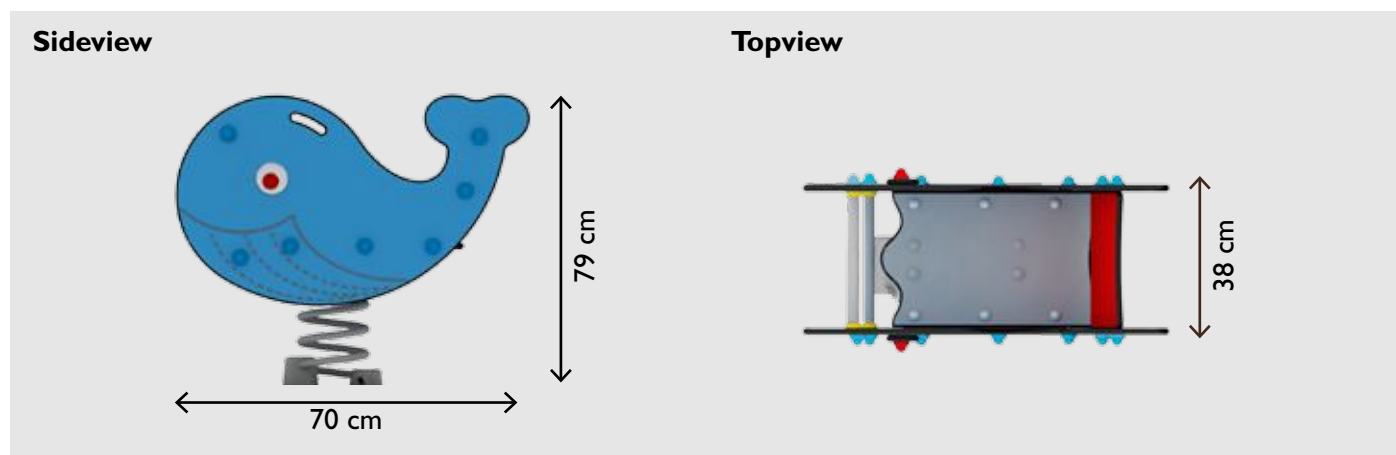
Technical data



Specifications

Item 302110

Dimensions (cm):	L 85 - W 38 - H 79
Space required:	285 x 238 cm
Seat height:	45 cm
Safety surface:	IAW EN1177
Age group:	from 1 year



Safe playground in top quality ...

All standing and sitting surfaces are coated with skid-proof rubber – compliments from the car industry.



All edges on all our products - be they made of wood or polythylene - are rounded.



All nuts and bolt ends are capped by nut covers to protect children from sharp edges.



All handles offer good grip and are rounded to reduce the risk of eye and dental injuries. All handles are made of nylon so that fingers can't freeze to them.



Springs of special steel can bend into all directions. Intervals between the coils minimize crushing hazard. Patented spring suspension with self locking nuts.



All nut covers, foot rests etc. are made of impact-proof nylon that can take temperatures from -40°C til +110°C.



PAH free

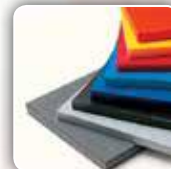
All synthetic materials are checked for PAH by TÜV.



This product is controlled and approved by TÜV in accordance with the latest release of EN 1176.



All PoLedon-boards and tube elements are made of eco-friendly polyethylene (PE). Advantages: no maintenance - non-toxic - 100% recyclable - cracks and scratches do not affect the material's stability or longevity. All PoLedon-boards are UV-stabilized. 5 years guarantee against considerable fading. 10 years guarantee on material faults and manufacturing errors. Our polyethylene boards do not split, junctions between them are seamless. Neither fingers nor parts of clothing can get stuck or rip.



Guarantee

10 years on material faults and production errors.
5 years against considerable fading of synthetic parts.